



NTSC U/C

PlayStation®



SLUS-00945
00945

KONAMI arcade classics

TM



®

WARNING: READ BEFORE USING YOUR PLAYSTATION® GAME CONSOLE.

A very small percentage of individuals may experience epileptic seizures when exposed to certain light patterns or flashing lights. Exposure to certain patterns or backgrounds on a television screen or while playing video games, including games played on the PlayStation game console, may induce an epileptic seizure in these individuals. Certain conditions may induce previously undetected epileptic symptoms even in persons who have no history of prior seizures or epilepsy. If you, or anyone in your family, has an epileptic condition, consult your physician prior to playing. If you experience any of the following symptoms while playing a video game – dizziness, altered vision, eye or muscle twitches, loss of awareness, disorientation, any involuntary movement or convulsions – IMMEDIATELY discontinue use and consult your physician before resuming play.

WARNING TO OWNERS OF PROJECTION TELEVISIONS:

Do not connect your PlayStation game console to a projection TV without first consulting the user manual for your projection TV, unless it is of the LCD type. Otherwise, it may permanently damage your TV screen.

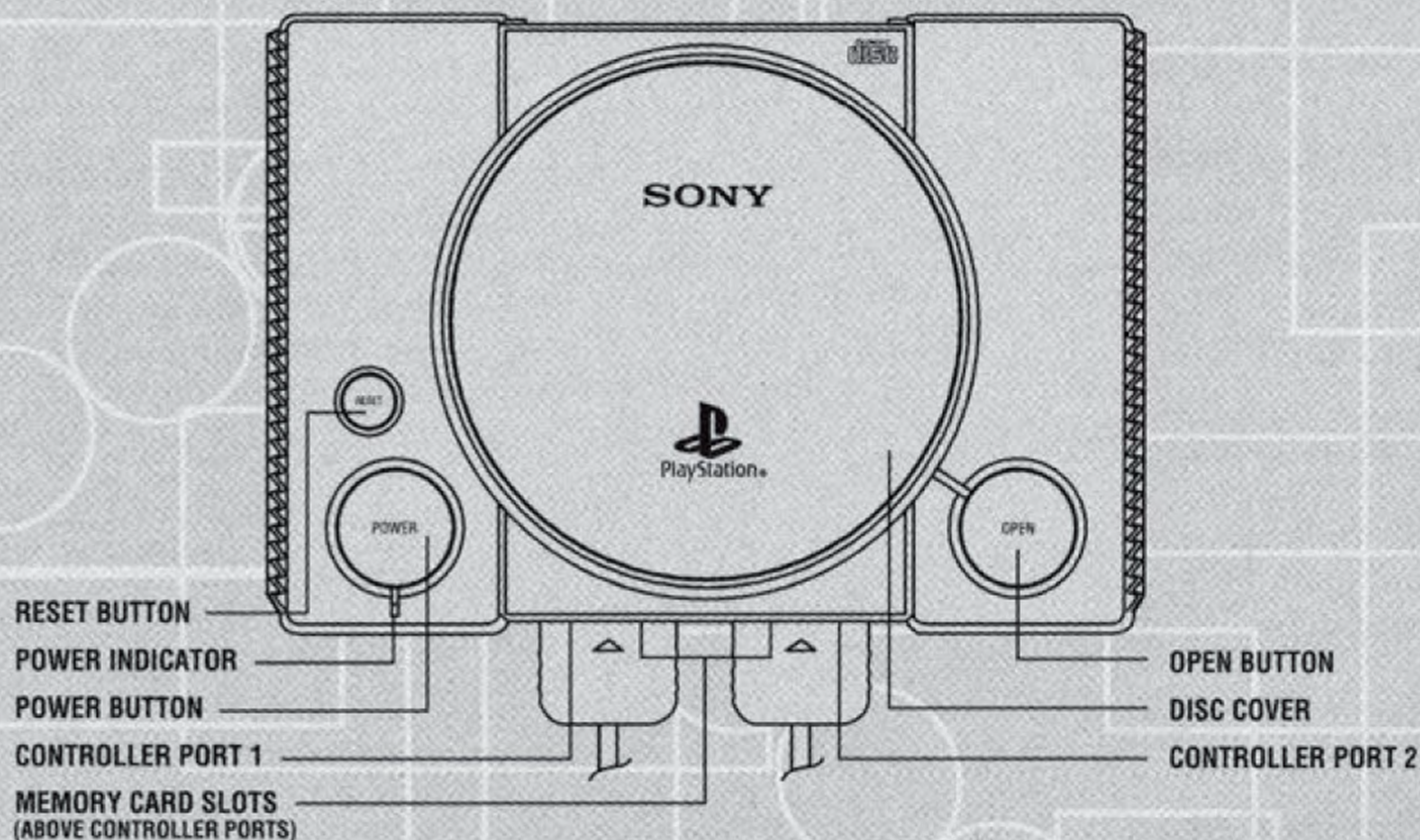
HANDLING YOUR PLAYSTATION® DISC:

- This compact disc is intended for use only with the PlayStation game console.
- Do not bend it, crush it or submerge it in liquids.
- Do not leave it in direct sunlight or near a radiator or other source of heat.
- Be sure to take an occasional rest break during extended play.
- Keep this compact disc clean. Always hold the disc by the edges and keep it in its protective case when not in use.
- Clean the disc with a lint-free, soft, dry cloth, wiping in straight lines from center to outer edge. Never use solvents or abrasive cleaners.

Contents

| | |
|-----------------------|-----|
| Getting Started | .2 |
| The Controls | .3 |
| Pooyan | .4 |
| Scramble | .5 |
| Yie Ar Kung-Fu | .6 |
| Roc 'N Rope | .7 |
| Shao-Lin's Road | .8 |
| Circus Charlie | .9 |
| Super Cobra | .10 |
| Road Fighter | .11 |
| Time Pilot | .12 |
| Gyruss | .13 |
| Notes | .14 |
| Credits | .16 |
| Warranty | .17 |

Getting Started



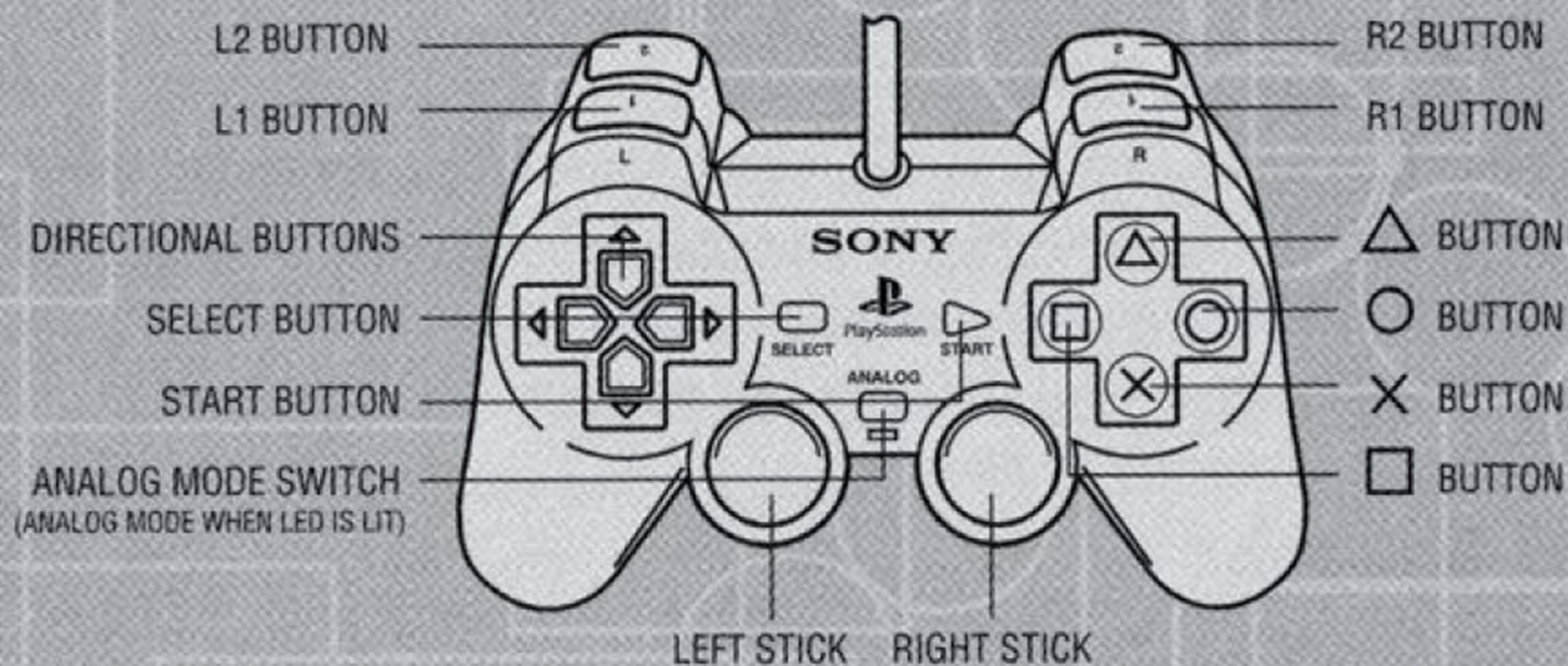
Set up your PlayStation® game console according to the instructions in its Instruction Manual. Make sure the power is off before inserting or removing a compact disc. Insert the Konami Arcade Classics disc and close the disc cover. Insert a game controller and turn on the PlayStation game console. Follow on-screen instructions to start a game.

Memory Cards

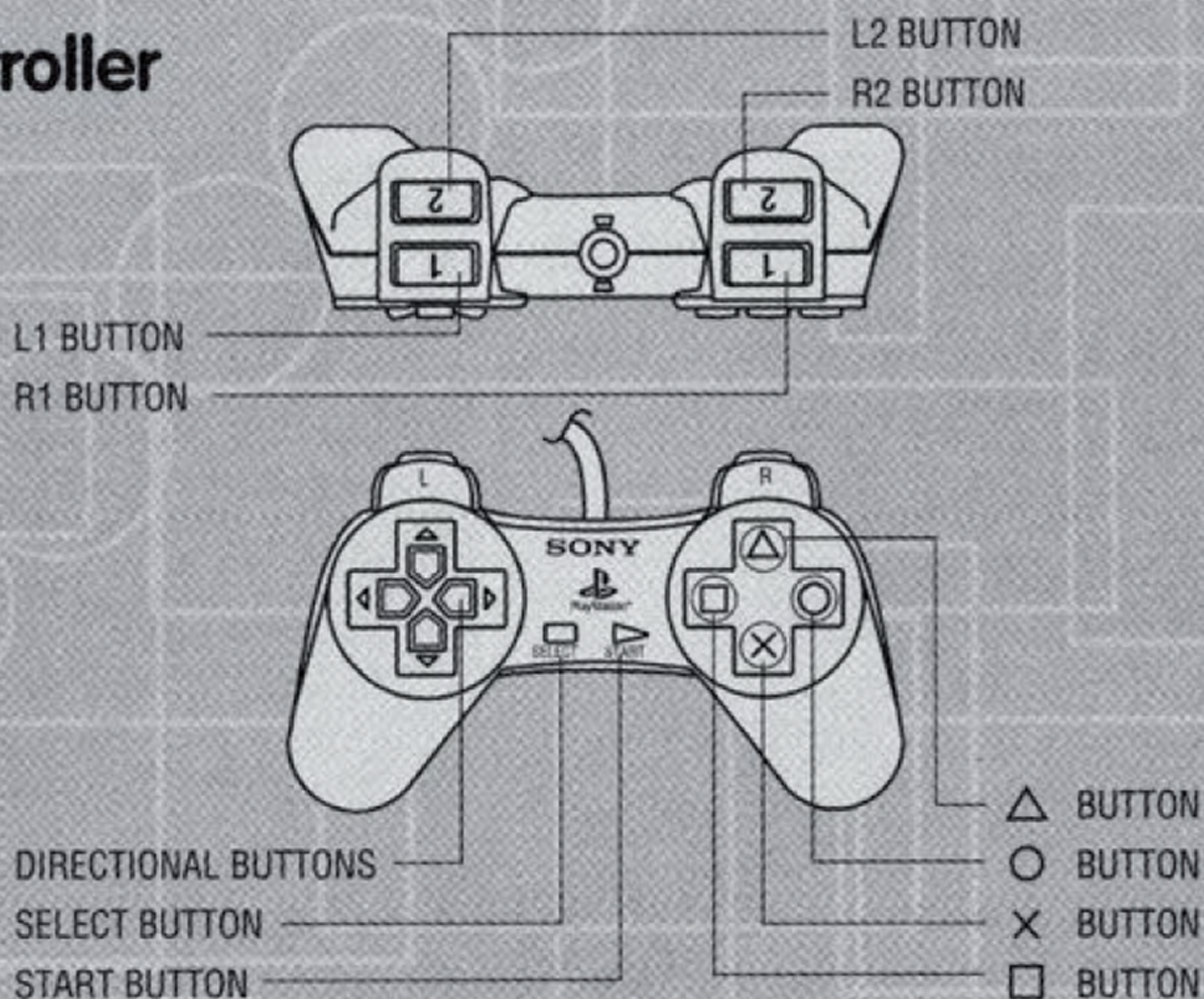
To save game settings and progress, insert a Memory Card into Memory Card slot 1 or slot 2 of the PlayStation game console before starting play. You can load your saved games from the same card, or from any Memory Card containing previously saved Konami Arcade Classics games.

The Controller

Analog Controller



Digital Controller



NOTE: Please refer to each game for specific controller instructions (see p.4-13)

Pooyan

Released: 1982

Description/Objective:

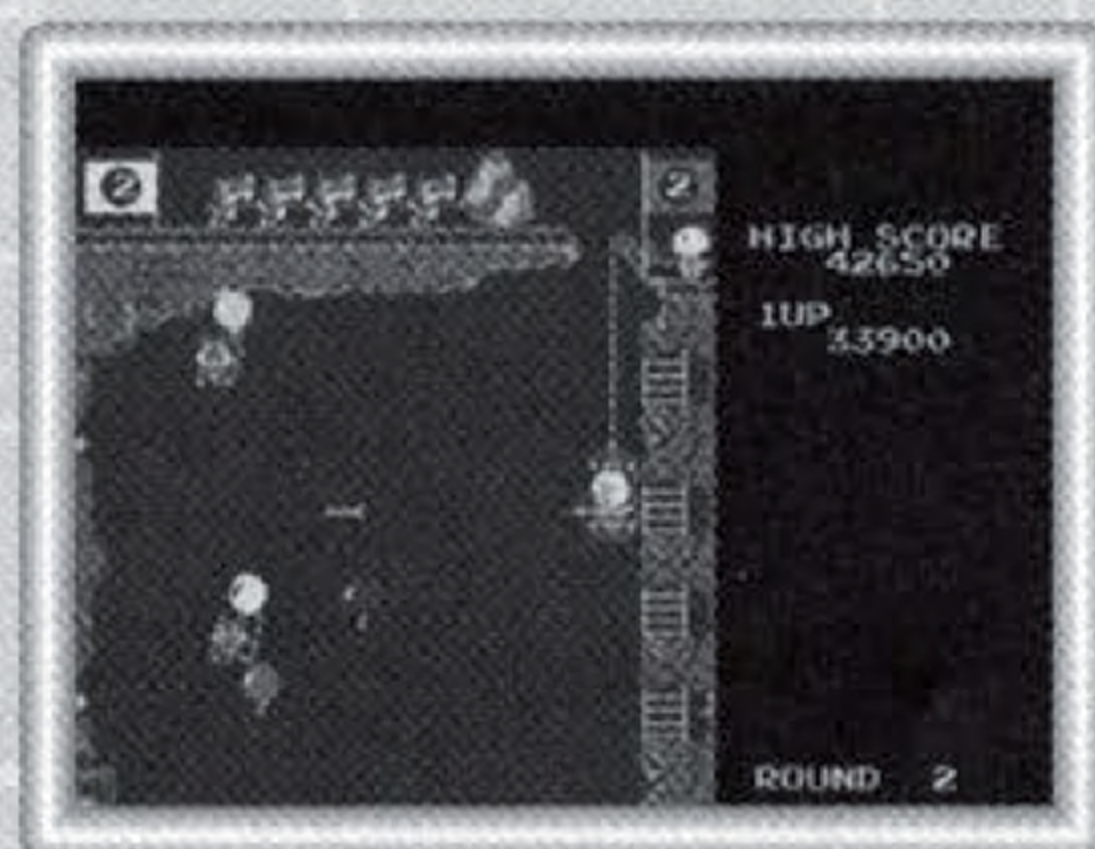
You control Mama pig who tries to protect her children from being kidnapped by the big bad wolves. You are equipped with a bow and arrow and heavy meat to prevent the wolves from getting to the ground or fly to the air with balloons.

Game Controls:

- × Button: arrows & meat
- Button: arrows & meat



1st Stage: Wolves float down to the stairs to try and take a bite out of Mama pig.



2nd Stage: Wolves try to float to the top with balloons. If they reach the top, they team up and try to push the big boulder on Mama.

Defeat the wolves and rescue your captive children.

Scramble

Released: 1981

Description/Objective:

How far can you invade our Scramble system? Pilot your ship, which is equipped with the single pixel shot and bombs, through 6 stages of endless fun. Remember to refuel your ship by destroying the fuel tanks that fly by or you will crash. The sequel to this game was Super Cobra where you fly a helicopter with similar (and harder) levels.

Game Controls:

- × Button: missile shot
- Button: shot



Yie Ar Kung-Fu

Released: 1985

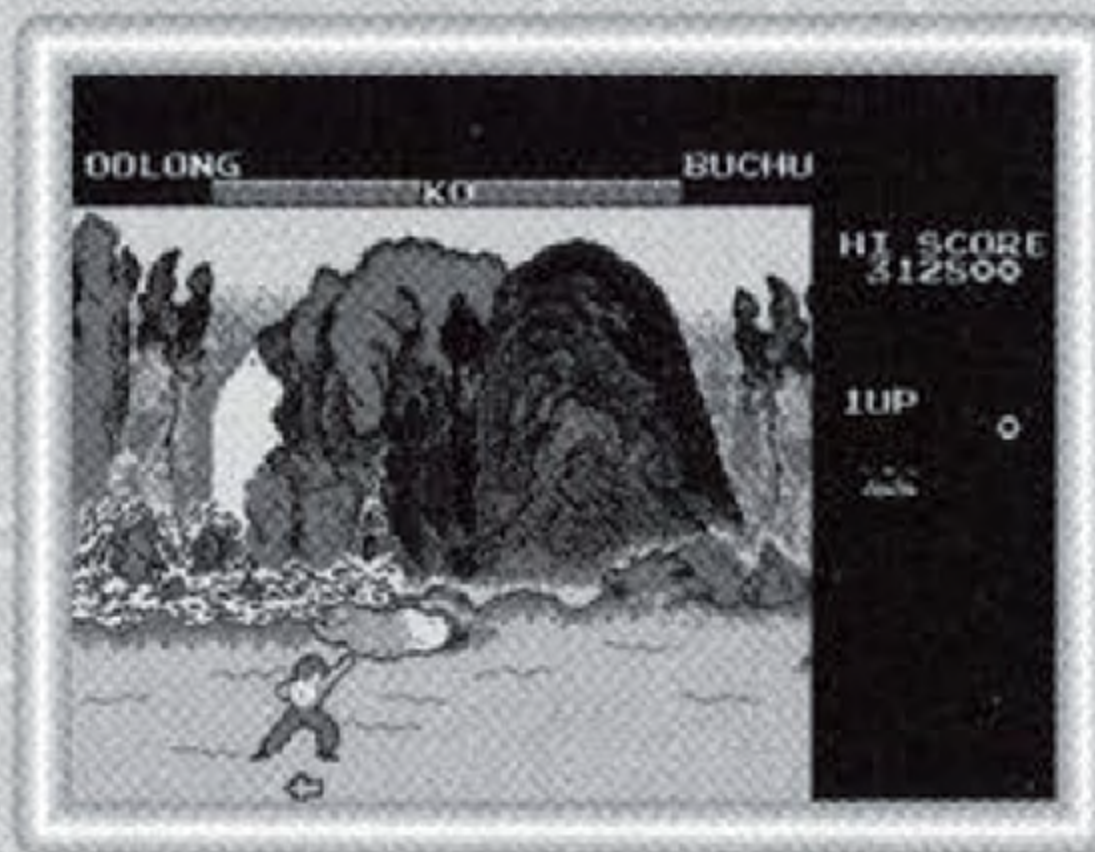
Description/Objective:

A single player mid 80's fighting game that boasts a lot of fancy martial arts moves. This game was way ahead of its time and features game play mechanics that lead into today's fighting games.

Game players today still wish you could play this game head-to-head and pick characters.

Game Controls:

- × **Button:** kick
- **Button:** punch



Roc 'N Rope

Released: 1983

Description/Objective:

You control an archeologist in a quest to catch the golden bird. You must climb up ledges using a rope while avoiding enemies. You can stun enemies with your flashlight or make them fall off your rope.

Look for the golden eggs to become invincible for a few seconds, but watch out, these enemies can make you fall off your rope too. Can you handle all four challenging stages of Roc 'N Rope?

Game Controls:

- × **Button:** flashlight
- **Button:** connect ropes



Shao-Lin's Road

Released: 1985

Description/Objective:

An action game where your character does nothing but karate kicks. Your goal is to kick all the bad guys off the screen. Special power-ups come out depending on certain colored enemies. Be ready for the enemy boss at the end of every 2 levels. 2 levels per step. 5 steps in all.

Game Controls:

- × Button: jump
- Button: kick



Circus Charlie

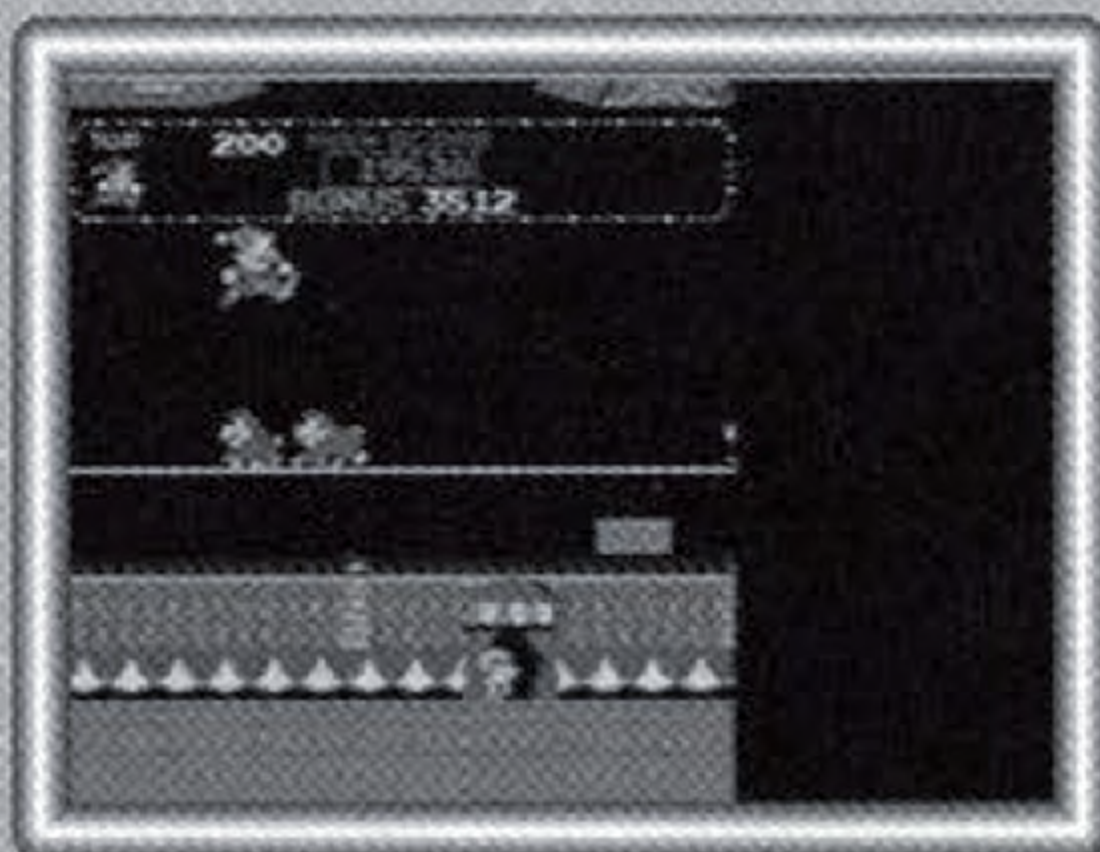
Released: 1984

Description/Objective:

Join the circus as Charlie, who's goal is to amaze the crowd with 6 crazy events, such as Fire Rings, Tight Rope, Ball Walk, Horseback, Trampoline, and Flying Trapeze. Each event must be completed as quickly as possible to score bonus points, but if time runs out, you lose one Charlie.

Game Controls:

- × Button: jump
- Button: jump



Super Cobra

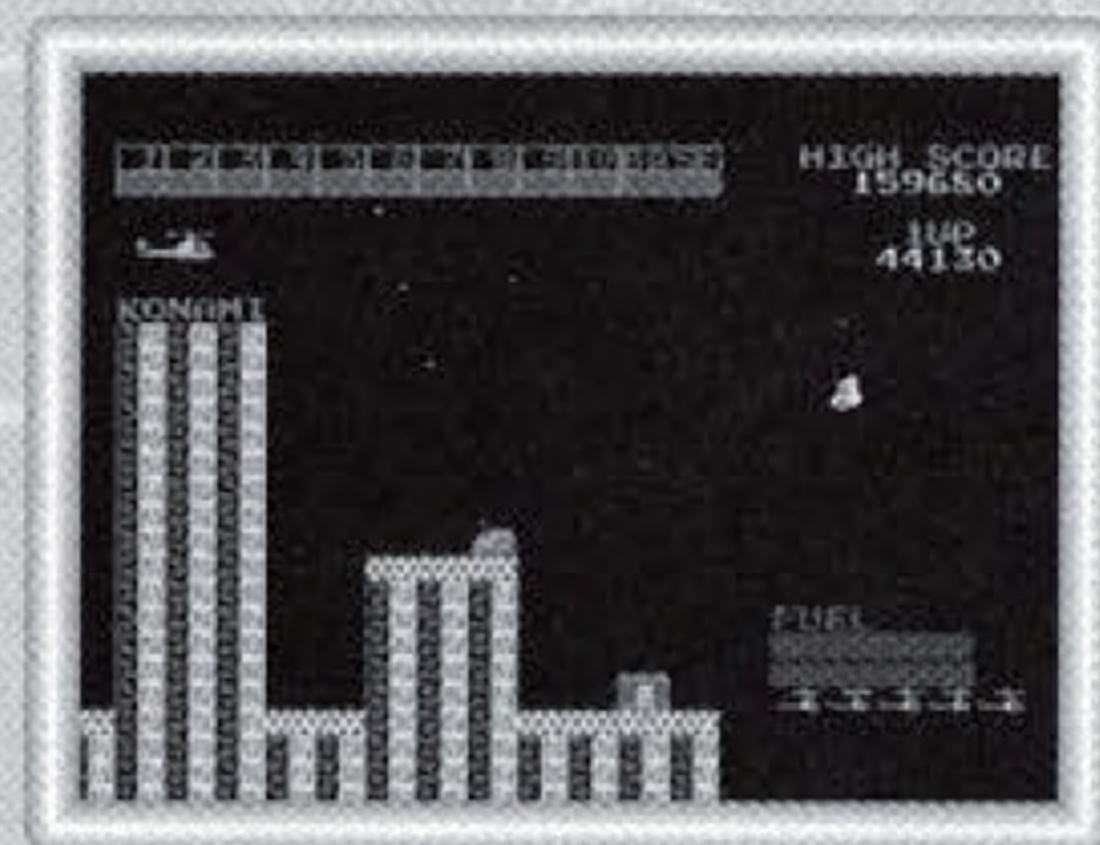
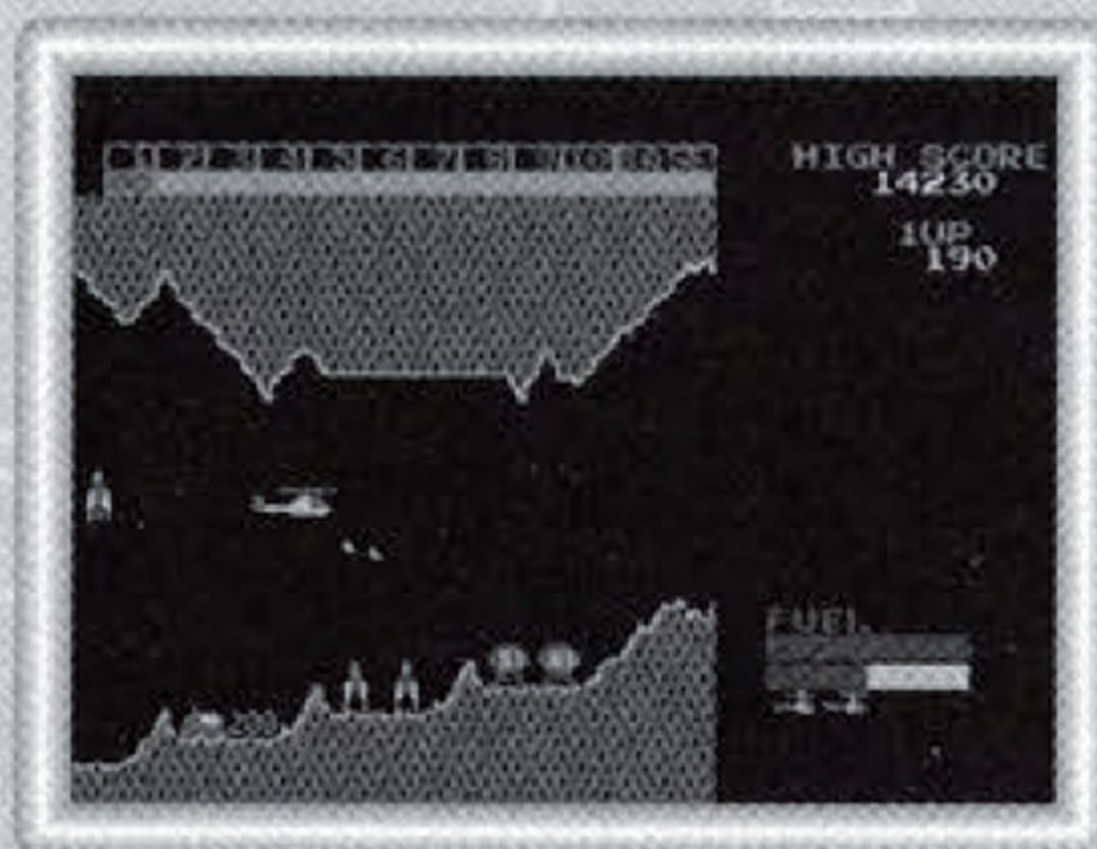
Released: 1981

Description/Objective:

Can you invade the Base and find the booty? You must pilot your chopper through 11 levels of treacherous terrain. You'll encounter homing missiles, tanks, and other annoying enemies. Just like Scramble, remember to refuel your helicopter by destroying the fuel tanks that fly by. This was the sequel to Scramble with much more difficulty.

Game Controls:

- × Button: missile shot
- Button: shot



Road Fighter

Released: 1984

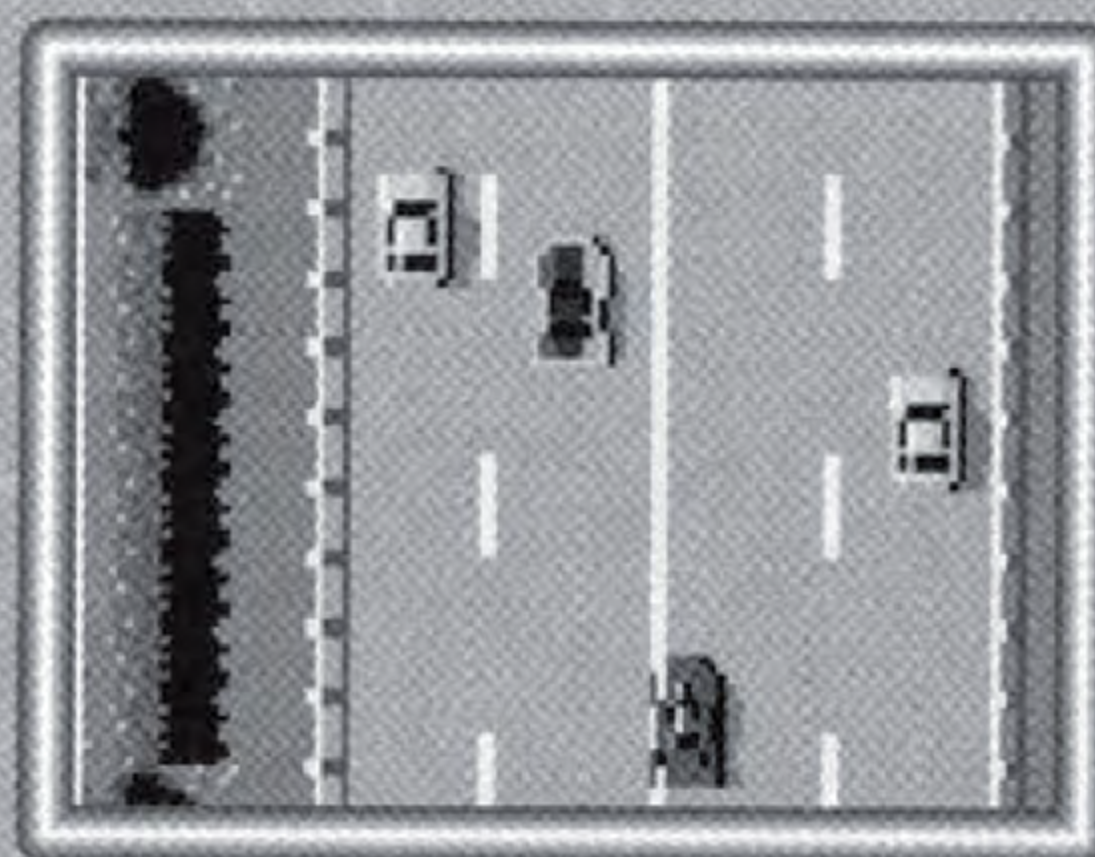
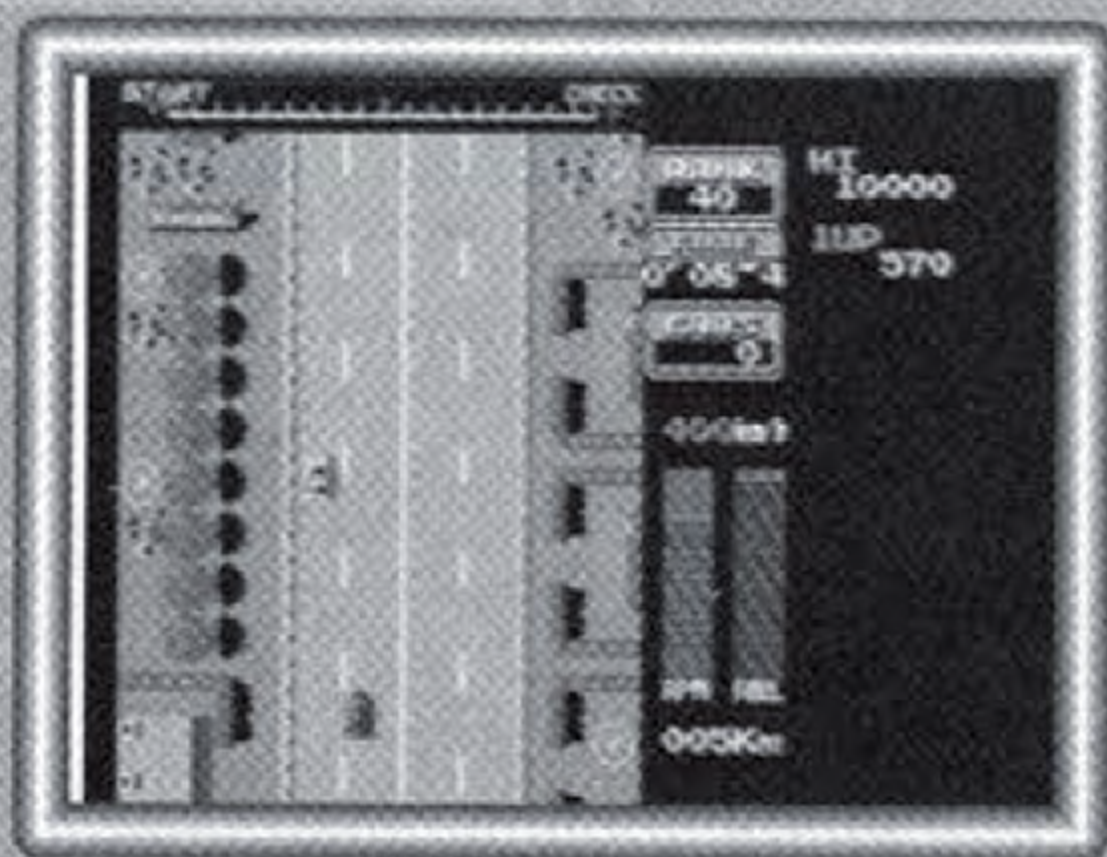
Description/Objective:

A vertical scrolling driving game where you must race through 6 levels of nerve-racking racing. Can you pass 39 cars and come in 1st place?

Remember that you can repeatedly press the left and right directional buttons to regain control of your car. Try not to crash often or you will never finish the race.

Game Controls:

- × Button: high gear
- Button: low gear



Time Pilot

Released: 1982

Description/Objective:

One of the most popular Konami arcade shoot 'em up titles where you travel in time from 1910, 1940, 1970, 1982, and the year 2001 shooting different enemies and bosses from those time periods. With the freedom to fly anywhere by piloting your futuristic space ship, make sure that you take out 56 enemy crafts in your current time period before the enemy boss comes out.

Game Controls:

- × Button: shot
- Button: shot



Gyruss

Released: 1983

Description/Objective:

Travel to the different planets of the universe in Gyruss, where you can spin your ship around 360 degrees! Destroy enemy ships that get in your way to proceed in warping to your destination planet. Get perfect accuracy on the Chance Stages for a big 10,000 point bonus. Featuring stereo sound by 15 tone generators and discrete circuits for synthetic drums and sound effects, Gyruss demonstrates some of the best music for an arcade game in 1983. With 23 stages in all, can you reach Earth?

Game Controls:

- × Button: shot
- Button: shot



Notes

Notes

Credits

KONAMI OF AMERICA, INC.

Produced By:KCET

Producer:Ken Ogasawara

Director of Marketing:Chris Mike

Vice President of Sales:Brad Wildes

Director of Operations:Linda Stackpoole

Product Manager:Jason Enos

Marketing Communications Manager: ..Cherrie McKinnon

Creative Services Coordinator:Tomoko Yoshida

Product Specialist:Wilson Cheng

Consumer Services:Jim Hernandez

**Special Thanks:Doug Rebert, Debra Heinz,
Tracy Austin, Daniel Castillo,
Craig Howe, Akira
Kinebuchi, Jim Hernandez,
Everyone at KOA.**

**Packaging:James Berta
Beeline Group, Inc.**

Warranty

Konami of America, Inc. warrants to the original purchaser of this Konami software product that the medium on which this computer program is recorded is free from defects in materials and workmanship for a period of ninety (90) days from the date of purchase. This Konami product is sold "as is," without express or implied warranty of any kind, and Konami is not liable for any losses or damages of any kind resulting from use of this program. Konami agrees for a period of ninety (90) days to either repair or replace, at its option, free of charge, any Konami product, postage paid, with proof of date of purchase, at its Factory Service Center. This warranty is not applicable to normal wear and tear. This warranty shall not be applicable and shall be void if the defect in the Konami software product has arisen through abuse, unreasonable use, mistreatment or neglect.

THIS WARRANTY IS IN LIEU OF ALL OTHER WARRANTIES AND NO OTHER REPRESENTATIONS OR CLAIMS OF ANY NATURE SHALL BE BINDING ON OR OBLIGATE KONAMI. ANY IMPLIED WARRANTIES APPLICABLE TO THIS SOFTWARE PRODUCT, INCLUDING WARRANTIES OF MERCHANTABILITY AND FITNESS FOR A PARTICULAR PURPOSE, ARE LIMITED TO THE NINETY (90) DAY PERIOD DESCRIBED ABOVE. IN NO EVENT WILL KONAMI BE LIABLE FOR ANY SPECIAL INCIDENTAL OR CONSEQUENTIAL DAMAGES RESULTING FROM POSSESSION, USE OR MALFUNCTION OF THIS KONAMI PRODUCT.

Some states do not allow limitations as to how long an implied warranty lasts and/or exclusions or limitations of incidental or consequential damages so the above limitations and/or exclusions of liability may not apply to you. This warranty gives you specific rights, and you may also have other rights which vary from state to state.

If you experience technical problems with your game pak, please call our Warranty Services number (650) 654-5687.

Konami of America Inc.,
1400 Bridge Parkway
Redwood City, CA 94065

CONSUMER SUPPORT

If you feel stuck in the game, or just need a boost, don't worry! You can call the Konami Game Hint & Tip Line for help on this software and all the fine Konami products.

Konami Game Hint & Tip Line: 1-900-896-HINT (4468)

- ☎ 95¢ per minute charge
- ☎ \$1.25 per minute support from a game counselor
- ☎ Touch tone phone required
- ☎ Minors must have parental permission before dialing

Hints are available 24 hours a day. Live support Monday-Friday 8:00 A.M. to 4:30 P.M. Pacific Time. Prices and availability are subject to change, U.S. accessibility only.



Swimming Your Way Soon!

Konami ©, Fisherman's Bait ©, Big Ol' Bass™, and Konami Arcade Classics™ are trademarks of Konami Co., Ltd. © 1999.
ALL RIGHTS RESERVED.

www.konami.com

Licensed by Sony Computer Entertainment America for use with the PlayStation game console. PlayStation and the PlayStation logos are registered trademarks of Sony Computer Entertainment Inc. The ratings icon is a trademark of the Interactive Digital Software Association. Manufactured and printed in the U.S.A. THIS SOFTWARE IS COMPATIBLE WITH PLAYSTATION GAME CONSOLES WITH THE NTSC U/C DESIGNATION. U.S. AND FOREIGN PATENTS PENDING.

